

# Infrared Sensor T8 Tube + RF Linkage

Series Type: IL

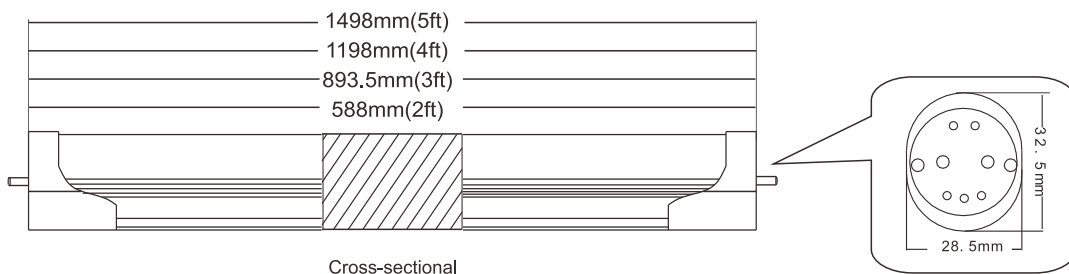
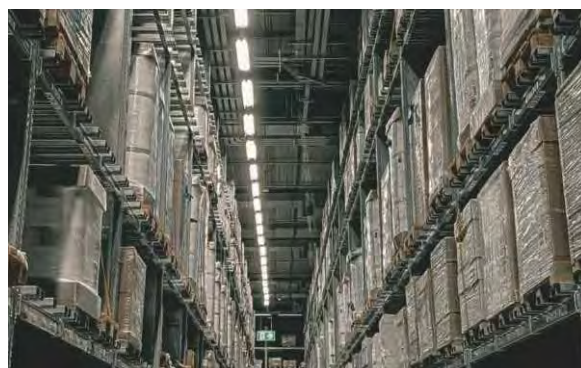


紅外感應  
區域聯動

Flick Free  
(無閃頻)  
保護視力

## Features 產品特點 >>

- Each lamp tube receives an induction signal (APP operation is not required)
- When the signal is first sensed, a wireless wave signal will be sent, and the nearby lamps will receive the signal and emit light according to the strength of the signal
- The detection distance of infrared sensor is 3-5M
- The lamp sleep brightness can be set to 0%-90%
- Applicable to: underground parking lot, corridor, corridor, warehouse, basement and other places
- 每一燈管都有接收到感應信號(不需要APP操作)
- 當第一感應到信號時,就會發出無線波信號,附近的燈管都會接受到信,並根據信號強弱發光
- 紅外感測器探測距離3-5米
- 燈管休眠亮度可設置0%-90%
- 適用於:走廊、樓道、倉庫、車庫、地下室、洗手間等場所



## Specification 產品規格 >>

Model 型號	Voltage 電壓	Wattage 功率	Length 長度	Lamp Life 光度壽命	Colour Temp 色溫	Lumen Output 輸出流明	Color Rendering 顯色度	Lamp Base 燈腳	PCS/CTN 每箱數量
	(V)	(W)	(mm)	(Hrs)	(K)	(Lm/W)	(CRI)		(pcs)
LT-I0609-IL128A	100~240	9	600	50000	3000/4000/6500	120	>80	T8,G13	25
LT-I0912-IL128A	100~240	12	900	50000	3000/4000/6500	120	>80	T8,G13	25
LT-I1218-IL128A	100~240	18	1200	50000	3000/4000/6500	120	>80	T8,G13	25
LT-I1522-IL128A	100~240	22	1500	50000	3000/4000/6500	120	>80	T8,G13	25

- Light efficiency (lm/W), Power (W), Color Rendering Index (CRI), Can be customized according to customer needs
- Our Standard Power factor (PF) > 0.9 and Total harmonic index THD < 15%, According to customer requirements can produce a lower THD < 10%
- This type of certification is issued by a government-approved laboratory for Safety certification, Fire testing, Restriction of Hazardous Substances (RoHS), Photobiological safety of lamps and lamp systems. (an Exemption Group) and other test certifications to ensure product quality
- 光效 (lm/W)、功率 (W)、顯色指數 (CRI), 可根據客戶需求定制
- 此型號標準之功率因素 (PF) > 0.9, 總諧波指數 THD < 15%, 可按客戶需要生產低總諧波指數 < 10%
- 此型號認證由可實驗室發出之安全認證消防測試, 環保物料 (RoHS), 光生物安全為 Exemption Group 及其它測試, 保證客戶使用更安心滿意