

| EASTLIKE LED Co., Ltd

CATALOG

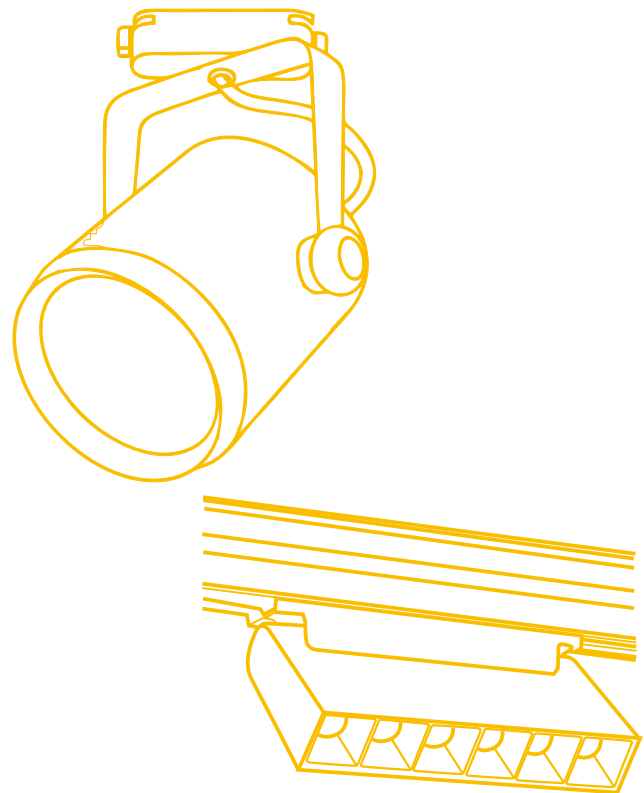
LED Lighting Series

Green

Low Carbon

Energy Saving

9. Track Light





公司簡介 Company Profile

LED Lighting

EAST

LED Lighting®
EAST



製造和營銷綠色低碳節能照明產品

Manufacturing And Marketing Green Low Carbon
And Energy Saving Lighting Products

EASTLIKE LED COMPANY 東 欏 照 明 公 司

EASTLIKE LED Co., Ltd • emerges as a lighting designer, manufacturer and supplier established in Hong Kong and Mainland China .

The company devotes herself in the development, manufacturing and marketing of green, low-carbon and energy-saving lighting products. we are proud to provide a wide range of LED products

東欏LED照明公司•您的照明設計師。

我們作為製造商和供應服務於香港和中國大陸。公司致力於開發，製造和行銷綠色，低碳和節能照明產品。

我們竭誠為您服務，為您提供種類繁多的LED產品。

目录

Content



Borderless Magnetic Track Lamp

Series Type: ETLMF40



Features 產品特點

- ★ It is more convenient to install and replace with strong magnetic adsorption
- ★ The use position can be changed freely by sliding on the track strip
- ★ With safety buckle, it makes the use more safe, reliable and firm.
- ★ Lamps and lanterns can be increased or decreased
- ★ DC48V safe low-voltage power supply is adopted to ensure safer use
- ★ 採用強磁吸附安裝與更換更加便捷
- ★ 在道軌條上可以隨意滑動改變使用位置
- ★ 帶安全卡扣，讓使用得更加安全可靠牢固
- ★ 可在道軌條上隨意增減燈具
- ★ 採用DC48V安全低壓供電，確保使用更加的安全

Specification 產品規格

Model 型號	Voltage 電壓	Power 功率	Lumen Output 輸出流明	Color Rendering 顯色度	Colour Temp 色溫	Life Time 壽命	Beam Angle 光束角	Working temperature 工作溫度	Size 尺寸
	(V)	(W)	(Lm/W)	(CRI)	(K)	(H)	(°)	(°C)	(mm)
ETL-0410	48	10	100	80	4000	20000	24°	-20~45	105 *40mm

Light efficiency (lm/W), Power (W), Color Rendering Index (CRI), Can be customized according to customer needs.

Our Standard Power factor (PF) > 0.9 and Total harmonic index THD < 15%, According to customer requirements can produce a lower THD < 10%.

This type of certification is issued by a government-approved laboratory for Safety certification, Fire testing, Restriction of Hazardous Substances (RoHS), Photobiological safety of lamps and lamp systems. (an Exemption Group) and other test certifications to ensure product quality

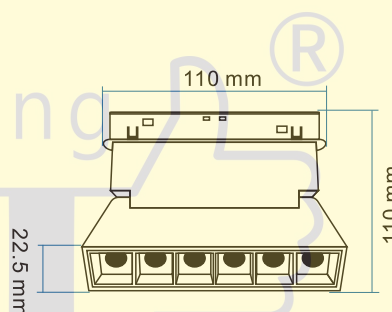
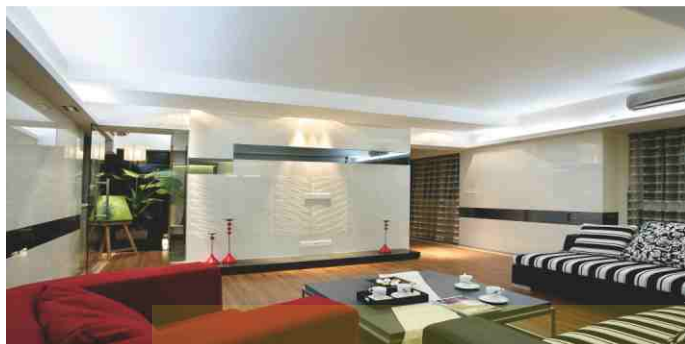
光效 (lm/W)、功率 (W)、顯色指數 (CRI)，可根據客戶需求定制。

此型號標準之功率因素 (PF) > 0.9，總諧波指數 THD < 15%，可按客戶需要生產低總諧波指數 < 10%。

此型號認證由可實驗室發出之安全認證消防測試，環保物料 (RoHS)，光生物安全為 Exemption Group 及其它測試，保證客戶使用更安心滿意。

Open Mounted Magnetic Suction Rail Lamp

Series Type: ETLMD45



Features 產品特點

- ★ It is more convenient to install and replace with strong magnetic adsorption
 - ★ The use position can be changed freely by sliding on the track strip
 - ★ With safety buckle, it makes the use more safe, reliable and firm.
 - ★ Lamps and lanterns can be increased or decreased
 - ★ DC48V safe low-voltage power supply is adopted to ensure safer use
- ★ 採用強磁吸附安裝與更換更加便捷
 - ★ 在道軌條上可以隨意滑動改變使用位置
 - ★ 帶安全卡扣，讓使用得更加安全可靠牢固
 - ★ 可在道軌條上隨意增減燈具
 - ★ 採用DC48V安全低壓供電，確保使用更加的安全

Specification 產品規格

Model 型號	Voltage 電壓	Power 功率	Lumen Output 輸出流明	Color Rendering 顯色度	Colour Temp 色溫	Life Time 壽命	Beam Angle 光束角	Working temperature 工作溫度	Size 尺寸
	(V)	(W)	(Lm/W)	(CRI)	(K)	(H)	(°)	(°C)	(mm)
ETL-0406	48	6	100	80	4000	20000	24°	-20~45	110 *22.5*110mm

Light efficiency (lm/W), Power (W), Color Rendering Index (CRI), Can be customized according to customer needs.

Our Standard Power factor (PF) > 0.9 and Total harmonic index THD < 15%, According to customer requirements can produce a lower THD < 10%.

This type of certification is issued by a government-approved laboratory for Safety certification, Fire testing, Restriction of Hazardous Substances (RoHS), Photobiological safety of lamps and lamp systems. (an Exemption Group) and other test certifications to ensure product quality

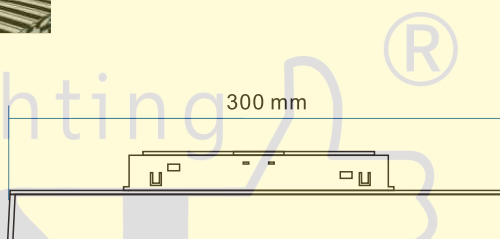
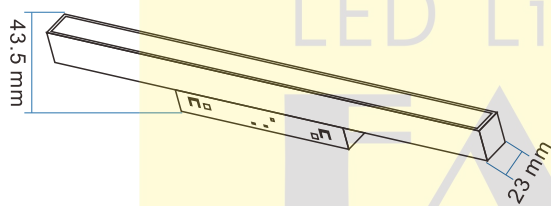
光效 (lm/W)、功率 (W)、顯色指數 (CRI)，可根據客戶需求定制。

此型號標準之功率因素 (PF) > 0.9，總諧波指數 THD < 15%，可按客戶需要生產低總諧波指數 < 10%。

此型號認證由可實驗室發出之安全認證消防測試，環保物料 (RoHS)，光生物安全為 Exemption Group 及其它測試，保證客戶使用更安心滿意。

Magnetic Suction Frameless Concealed Line Lamp

Series Type: ETLMF1C



Features 產品特點

- ★ It is more convenient to install and replace with strong magnetic adsorption
- ★ The use position can be changed freely by sliding on the track strip
- ★ With safety buckle, it makes the use more safe, reliable and firm.
- ★ Lamps and lanterns can be increased or decreased
- ★ DC48V safe low-voltage power supply is adopted to ensure safer use
- ★ 採用強磁吸附安裝與更換更加便捷
- ★ 在道軌條上可以隨意滑動改變使用位置
- ★ 帶安全卡扣，讓使用得更加安全可靠牢固
- ★ 可在道軌條上隨意增減燈具
- ★ 採用DC48V安全低壓供電，確保使用更加的安全

Specification 產品規格

Model 型號	Voltage 電壓	Power 功率	Lumen Output 輸出流明	Color Rendering 顯色度	Colour Temp 色溫	Life Time 壽命	Beam Angle 光束角	Working temperature 工作溫度	Size 尺寸
	(V)	(W)	(Lm/W)	(CRI)	(K)	(H)	(°)	(°C)	(mm)
ETL-0110	48	10	100	80	4000	20000	下照120°	-20~45	300*23 *43.5mm

Light efficiency (lm/W), Power (W), Color Rendering Index (CRI), Can be customized according to customer needs.

Our Standard Power factor (PF) > 0.9 and Total harmonic index THD < 15%, According to customer requirements can produce a lower THD < 10%.

This type of certification is issued by a government-approved laboratory for Safety certification, Fire testing, Restriction of Hazardous Substances (RoHS), Photobiological safety of lamps and lamp systems. (an Exemption Group) and other test certifications to ensure product quality

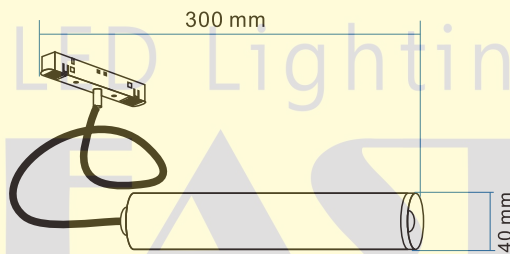
光效 (lm/W)、功率 (W)、顯色指數 (CRI)，可根據客戶需求定制。

此型號標準之功率因素 (PF) > 0.9，總諧波指數 THD < 15%，可按客戶需要生產低總諧波指數 < 10%。

此型號認證由可實驗室發出之安全認證消防測試，環保物料 (RoHS)，光生物安全為 Exemption Group 及其它測試，保證客戶使用更安心滿意。

Magnetic Suction Frameless Surface Mounted Guide Tube Chandelier

Series Type: ETLMD1C



Features 產品特點

- ★ It is more convenient to install and replace with strong magnetic adsorption
 - ★ The use position can be changed freely by sliding on the track strip
 - ★ With safety buckle, it makes the use more safe, reliable and firm.
 - ★ Lamps and lanterns can be increased or decreased
 - ★ DC48V safe low-voltage power supply is adopted to ensure safer use
- ★ 採用強磁吸附安裝與更換更加便捷
 - ★ 在道軌條上可以隨意滑動改變使用位置
 - ★ 帶安全卡扣，讓使用得更加安全可靠牢固
 - ★ 可在道軌條上隨意增減燈具
 - ★ 採用DC48V安全低壓供電，確保使用更加的安全

Specification 產品規格

Model 型號	Voltage 電壓	Power 功率	Lumen Output 輸出流明	Color Rendering 顯色度	Colour Temp 色溫	Life Time 壽命	Beam Angle 光束角	Working temperature 工作溫度	Size 尺寸
	(V)	(W)	(Lm/W)	(CRI)	(K)	(H)	(°)	(°C)	(mm)
ETL-0107	48	7	100	80	4000	20000	24°	-20~45	300*40mm

Light efficiency (lm/W), Power (W), Color Rendering Index (CRI), Can be customized according to customer needs.

Our Standard Power factor (PF) > 0.9 and Total harmonic index THD < 15%, According to customer requirements can produce a lower THD < 10%.

This type of certification is issued by a government-approved laboratory for Safety certification, Fire testing, Restriction of Hazardous Substances (RoHS), Photobiological safety of lamps and lamp systems. (an Exemption Group) and other test certifications to ensure product quality

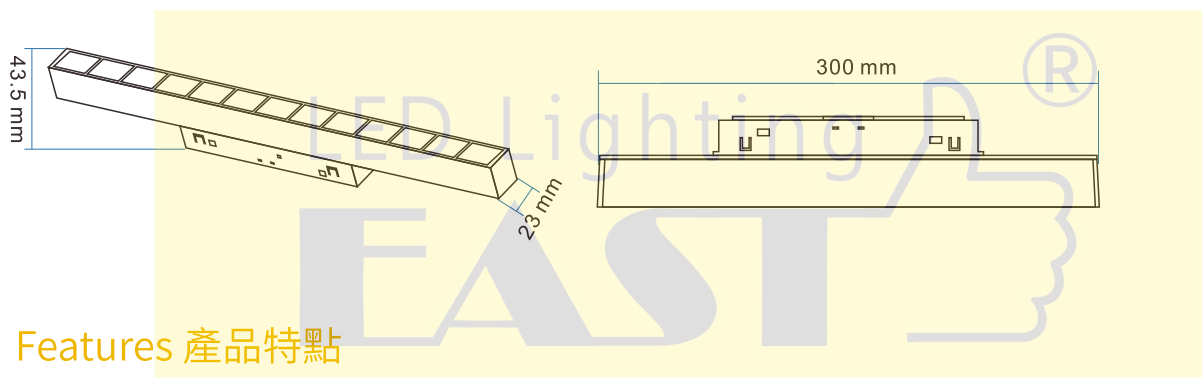
光效 (lm/W)、功率 (W)、顯色指數 (CRI)，可根據客戶需求定制。

此型號標準之功率因素 (PF) > 0.9，總諧波指數 THD < 15%，可按客戶需要生產低總諧波指數 < 10%。

此型號認證由可實驗室發出之安全認證消防測試，環保物料 (RoHS)，光生物安全為 Exemption Group 及其它測試，保證客戶使用更安心滿意。

Embedded Magnetic Grid Lamp

Series Type: ETLME85



Features 產品特點

- ★ It is more convenient to install and replace with strong magnetic adsorption
- ★ The use position can be changed freely by sliding on the track strip
- ★ With safety buckle, it makes the use more safe, reliable and firm.
- ★ Lamps and lanterns can be increased or decreased
- ★ DC48V safe low-voltage power supply is adopted to ensure safer use
- ★ 採用強磁吸附安裝與更換更加便捷
- ★ 在道軌條上可以隨意滑動改變使用位置
- ★ 帶安全卡扣，讓使用得更加安全可靠牢固
- ★ 可在道軌條上隨意增減燈具
- ★ 採用DC48V安全低壓供電，確保使用更加的安全

Specification 產品規格

Model 型號	Voltage 電壓	Power 功率	Lumen Output 輸出流明	Color Rendering 顯色度	Colour Temp 色溫	Life Time 壽命	Beam Angle 光束角	Working temperature 工作溫度	Size 尺寸
	(V)	(W)	(Lm/W)	(CRI)	(K)	(H)	(°)	(°C)	(mm)
ETL-0812	48	12	100	80	4000	20000	24°	-20~45	220*23 *43.5mm

Light efficiency (lm/W), Power (W), Color Rendering Index (CRI), Can be customized according to customer needs.

Our Standard Power factor (PF) > 0.9 and Total harmonic index THD < 15%, According to customer requirements can produce a lower THD < 10%.

This type of certification is issued by a government-approved laboratory for Safety certification, Fire testing, Restriction of Hazardous Substances (RoHS), Photobiological safety of lamps and lamp systems. (an Exemption Group) and other test certifications to ensure product quality

光效 (lm/W)、功率 (W)、顯色指數 (CRI)，可根據客戶需求定制。

此型號標準之功率因素 (PF) > 0.9，總諧波指數 THD < 15%，可按客戶需要生產低總諧波指數 < 10%。

此型號認證由可實驗室發出之安全認證消防測試，環保物料 (RoHS)，光生物安全為 Exemption Group 及其它測試，保證客戶使用更安心滿意。



東 櫛 LED 照 明 公 司
EASTLIKE LED Co., Ltd

Office Address: Room B3, 18/F Bonsun Industrial Building,
364-366 Sha Tsui Road, Tsuen Wan, HongKong

Phone: 852-3974 5593

Fax: 852-3544 0462

Whatsapp: +852-6756 770

Email: info@eastlike.com