

Projects Job



Green



High Performance



Energy Saving

CONTENTS

Silvercord Building	1
Breamar Hill Chinese International School	4
Macau Tower	8
Industrial Building	11
Double Cove Kitchen Cabinet Light.....	12
HyD & EMSD Pilot Project	15
Peak Tower Staircase Lighting	19
WSD Plant Room Highbay Retrofit	21
Intelligent Lighting Control for Advertising Signage	29
Ling O Nuclear Plant Street Lighting Control	30
Intelligent Lighting Control At NFF(US)	31
Energy Management Consultation at Miramar Hotel, Hawaii, US	33

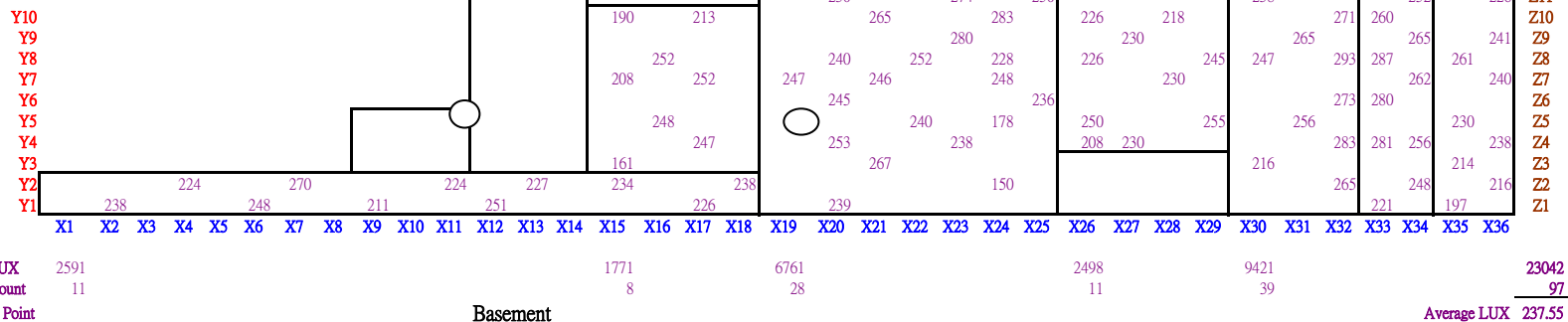
Silvercord Building

iLighting Supplied 254 pcs. high power T8 LED lamp to replace 36W FL lamp at Staircase of Tsim Sha Tsui Silvercord Commercial building car park to improve the lighting effect and demonstrated the energy saving through lighting retrofit by LED.

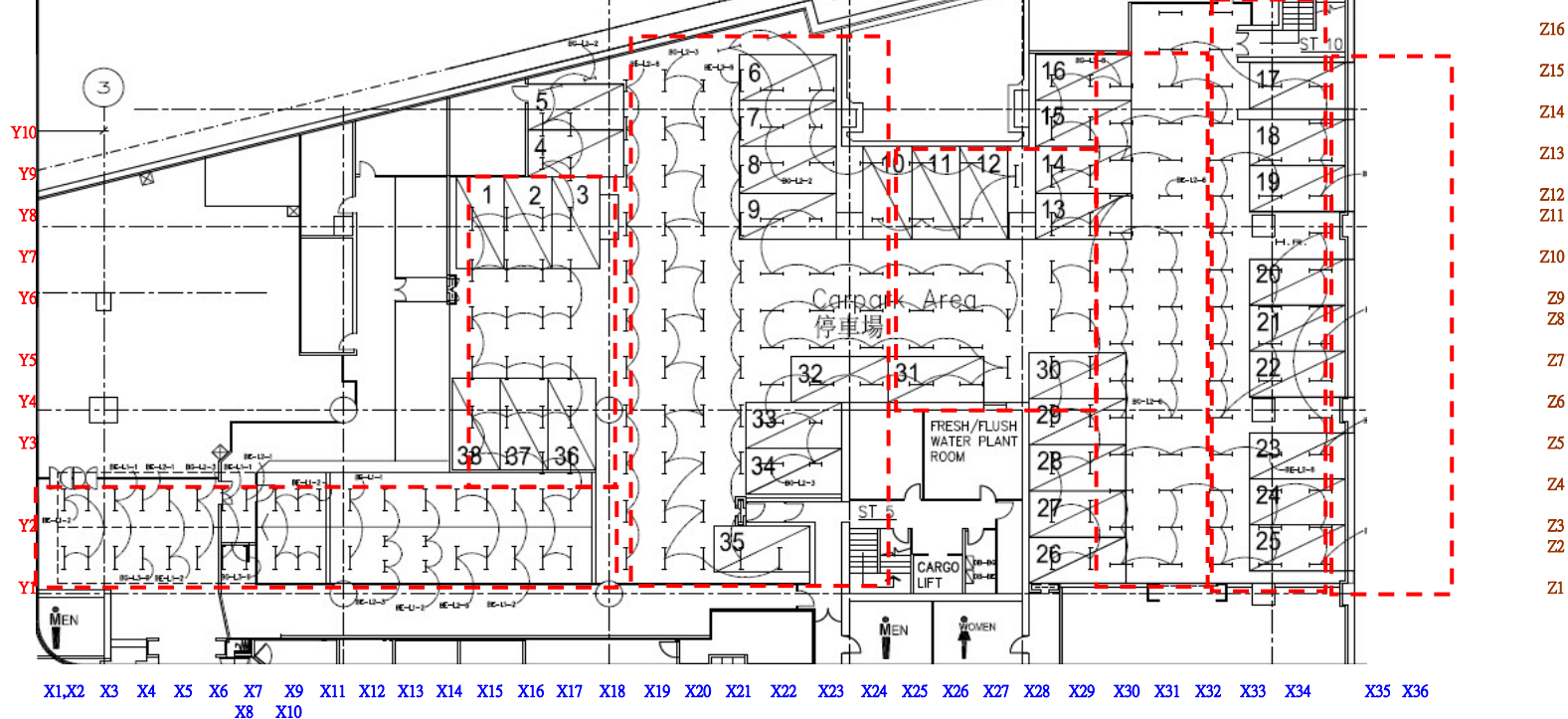


Time: 9:30pm - 10:30pm

LUX Meter Model: TES-1332A



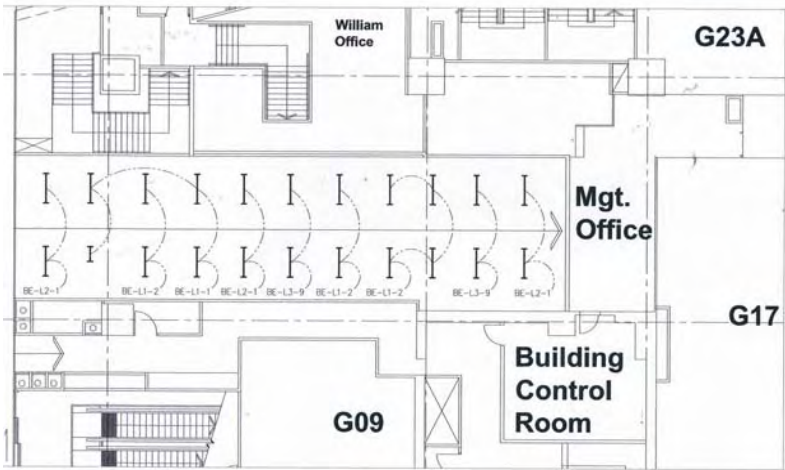
As-fitted Lighting Layout at Carpark
at Basement, Silvercord
Drawing No.: SK-01



140	200	220	229	
	247	267	174	

Total LUX	1477
Total Count	7
Average LUX	211

G/F Drive Entrance



Carpark Lighting Retrofit Results

Total Qty : 254 pcs

Client Requirement : Average LUX on floor = 200 LUX

Before retrofit 1200mm 36W T8 FL Tube, average LUX level : 100 LUX

After retrofit by 18W 1200mm LED Tube , average LUX level : 230 LUX

Energy saving calculation:

Annual Saving

T8 Fluorescent fitting = 254 x 46W x 24 x 365 /1000 KWh = 102352 KWh

T8 LED Tube = 254 x 18W x 24 x 365 /1000 KWh = 40051 KWh

Annual saving = (102352-40051) x HK\$1.1= HK\$68,531

Monthly Saving = HK\$5,710



Breamar Hill Chinese International School

iLighting supplied and installed 840 pcs LT high performance LED tube successfully to replace 2x58W T8 light box in one of the top class International school with its advantages of high energy saving and Luminous efficiency, long service life, excellent Color Rendering Index, no flicker, temperature cool. All indicators met the project acceptance standards after test. And compared with the original T8 lighting system, the lighting effects significantly improved both in anesthetic outlook and light quality. In addition, Life cycle maintenance cost is zero.



iLighting Company News Date September, 2011

International School Class Room Lighting Retrofit to “Super Bright” LED Tube by iLighting

iLighting supplied and installed 840 pcs LT high performance LED tube successfully to replace 2 x 58W T8 light box in one of the top class International school with its advantages of high energy saving and Luminous efficiency, long service life, excellent Color Rendering Index, no flicker, temperature cool. All indicators met the project acceptance standards after test. And compared with the original T8 lighting system, the lighting effects significantly improved both in anesthetic outlook and light quality. In addition, Life cycle maintenance cost is zero.



International School Campus



T8 Lighting before retrofit



The lighting effect of after applying super bright LED lamp is natural with the saving of more than 60% energy.



Close look at the LED lights in Thorn Classical formulae One Light Box



Average lighting intensity at 2M from the light source is 492 LUX

Energy Saving Calculation

Power consumption of 840 pcs lighting before retrofit (2 x T8 58W) :

$$(58W + 8W) * 840 / 1000 KW = 55.4 KW$$

Power consumption of 840 pcs lighting After retrofit (2 x T8 LED 28W):

$$(28W * 840) / 1000 KW = 23.5 KW$$

$$\text{Power saved} = 55.4 KW - 23.5 KW = 32 KW$$

Operating hours of lighting in one year:

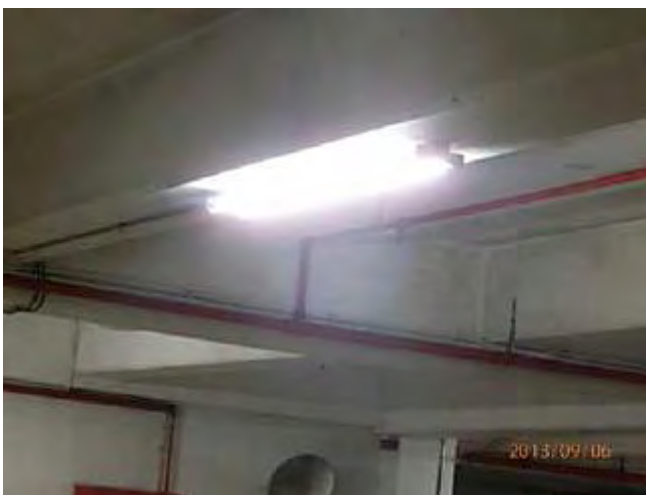
$$12 \text{ hours per day} * 365 \text{ days per year} = 4380 \text{ hours per year}$$

$$\text{Total energy saving per year} = 32 KW * 4380 = 140,160 KWHr$$

$$\text{Money saved per year} = 140,160 KWH * HK\$1.2 = \text{HK\$168,192.}$$

Macau Tower

iLighting is proud to supply 1800 pcs. special design LED tubes with beam angle 260 degree and 1950lm (lumen) to replace existing 36W fluorescent tube at Main Entrance and car park of Landmark of Macau - Macau Tower, sponsored by the Macau Government Environmental funding. The work was completed by end of August, 2013.



T8 LED LIGHTING RETROFIT AT MACAU TOWER



iLighting is proud to supply 1200 pcs. special design T8 LED tubes with beam angle 260 degree and 1950lm (lumen) to replace existing 36W fluorescent tube at Main Entrance and carpark of Landmark of Macau - Macau Tower, sponsored by the Macau Government Environmental funding. The work was completed by end of August, 2013.

The lighting effect and quality were found superior to the existing fluorescent tubes. Currently 120 degree beam angle LED tube in the market cannot eliminate the dark area on the top of tube due to heatsink design. iLighting wide angled LED tube has overcome this problem and looks like 360 degree fluorescent tube lighting effect while the output lumen has been increased by 30% compared to 120 degree tube.

Macau Tower – The Landmark



Fluorescent Tube at the Main hall Ceiling before retrofit – less brighter, dark corners and edges at ceiling frame rim.



iLighting LED Tube at the Main hall Ceiling after retrofit – brighter and no dark corners and edges at the ceiling frame rim.



ighting LED Tube at the Capark Floor – View 1

Note the wide angle effect of the light that shows no difference with the fluorescent tube in the scene (same light reflection on the ceiling without dark zone)



iLighting LED Tube at the Carpark Floor – View 2

Note the wide angle effect of the light that shows no difference with the fluorescent tube in the scene (same light reflection on the ceiling without dark zone)

Industrial Building

Bonsun Industrial Building is one of the industrial building at Tsuen Wan with initiative to achieve energy saving for the benefit of building owners and community by retrofitting the entire building by newly designed iLighting T8 LED tubes. Total 250 pcs T8 LED tubes installed with annual energy saving 57,540 KW/hr.

Light illumination intensity (Lux level per square meter area) increased by 15%.



Double Cove Kitchen Cabinet Light

iLighting is proud to supply innovative design LED PVC strips 10mm x 10mm with warm white color tailored for the kitchen cabinet in the newly developed high class residential buildings at MA On Shan on August, 2013.

The lighting effect and quality were found superior to the light bar or light tapes in the market. No dots can be seen by direct illumination and reflected illumination and easy to install in the kitchen cabinet.

Length of the LED strips were tailored to customer requirement.



LED Light Strip For High Class Residential Building



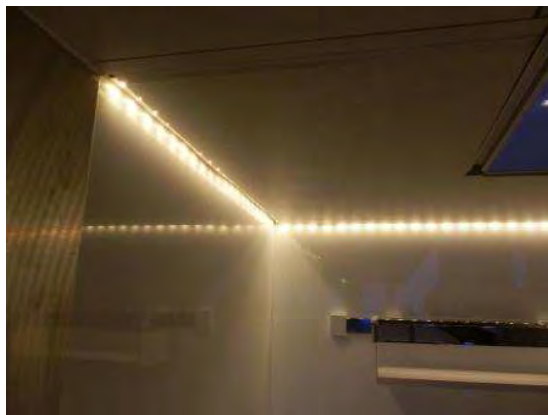
iLighting LED Strip is patented, full CE certified for both tube and driver.

iLighting is proud to supply innovative design LED PVC strips 10mm x 10mm with warm white color tailored for the kitchen cabinet in the newly developed high class residential buildings at MA On Shan on August, 2013.

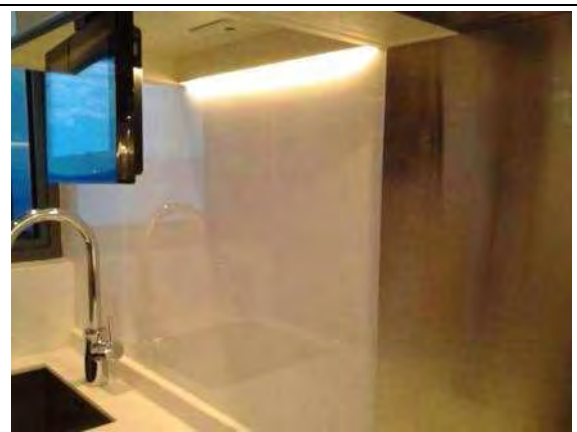
The lighting effect and quality were found superior to the light bar or light tapes in the market. No dots can be seen by direct illumination and reflected illumination and easy to install in the kitchen cabinet.

Length of the LED strips were tailored to each cabinet sizes for different flats.

iLighting Light Strip Photo



Light Strip In the market with dots seen and less light intensity



iLighting Innovative Light Strip with dots unseen and excellent light intensity, providing good light

reflection effect on the wall and cabinet table surface.



LED Light Tape by market supplier – dot seen and low light intensity.



iLighting Innovative Light Strip with dots unseen and excellent light intensity, providing good lighting effect on the cabinet wall and table surface.

HyD & EMSD Pilot Project

iLighting was invited by Highway Department to conduct a pilot project on LED lighting retrofit to footbridge of Hong Kong based on the government drafted specification on LED lighting. The monitoring period will be around 2 years from March, 2010.



HyD LED Lighting and Intelligent Control Pilot Project Report

iLighting was invited by Highway Department to conduct a pilot project on LED lighting retrofit to footbridge of Hong Kong based on the government drafted specification on LED lighting. The monitoring period will be around 2 years from March, 2010.

First Phase:

- 1) Install LED tube to replace the existing fluorescent tubes in footbridge light fitting.
- 2) Monitor the performance of LED tube on LUX level, Color rendering , light decay for two years.

Second Phase:

- 1) Install intelligent lighting control system with PIR sensor for real time monitoring and control by iPhone / iPad / Mobile utilizing the powerline and GPRS technology on site and on the web.

Company Current Movement

iLighting Product Co. Ltd. has been conducting a trial on highway footbridge with Hong Kong Government-Highway Dept. Street Lighting Section to explore the possibility to replace all city street FL tubes by LED tubes with intelligent dimming function.



Average FLC 50W / 700mg Tlm T5 tube on road = 800 lx
 Average LED 20W / 220mg Tlm T5 tube on road = 84 lx
 Width of bridge = 4.2m (approx)

FLC
 LED
 Lighting level provided by T5/TLED to refer
 Lighting level provided by FLC/LED to refer

Time: 1 Sept 2018 7:30pm



Via Central Footbridge KF 210, Linc on, 4th, 5th, 6th, 7th, 8th, 9th, 10th

**ILIGHTING PRODUCT CO. LTD.**

Rm1203, 12/F, Wang Lung Ind. Bldg., 11 Lung Tak Street, Tsuen Wan

香港荃灣龍德街宏龍工業大廈13樓1203室

Tel.: 35863418 Fax.: 31821626 Email.: info@ilighting.com.hk

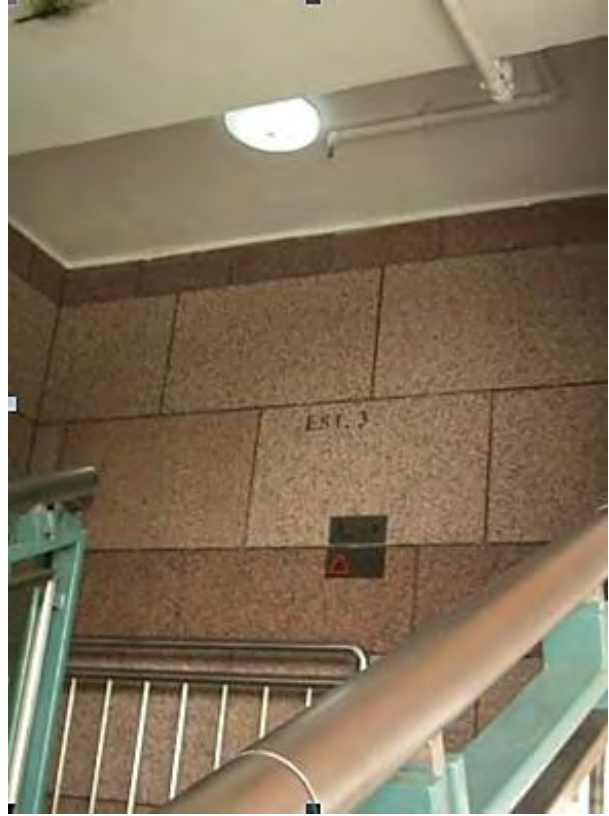
**LED
Tube**

No difference in
appearance and
light effect is
better after site
measurement

**Fluorescent
Tube**

Peak Tower Staircase Lighting

iLighting Supplies sensor controlled 10W LED Circular lamp to replace 22W FL lamp at Staircase of Peak Tower HK for Hang Lung Real Estate Management to demonstrate the energy saving through lighting retrofit by LED with intelligent sensor control. Energy saving recorded up to 80%.



LED Circular Lighting Case – Hong Kong Peak Tower



LED Circular Tube c/w PIR sensor
Installed at EST 3 staircase



More closer View



Close Up View

iLighting Supplies sensor controlled 10W LED Circular lamp to replace 22W FL lamp at Staircase of Peak Tower HK for Hang Lung Real Estate Management to demonstrate the energy saving through lighting retrofit by LED with intelligent sensor control.

Energy saving recorded up to 80%.

Installation date: Dec., 2009

WSD Plant Room Highbay Retrofit

Lighting supplied Long Life 200W Induction lamp to replace existing 400W HPS lamps at height about 10M level above ground. The retrofit had got satisfactory results with energy saving of 50% and light illumination level on ground floor increased to 100LUX more than before. The average LUX level on ground is about 350. /In addition, the color rendering had been increased from 40Ra to 80Ra.





WSD Shatin Water Plant room High Bay Lighting Retrofit



Period Tested: May , 2011 to August, 2011



Lighting Condition Before Installation



Pump Room No.2

30 PCS High bay
Lighting 400W

Replacement:
200W Induction
Lamp
Saving 200W

Requirement:
LUX level no less
than curent with
high CRI.

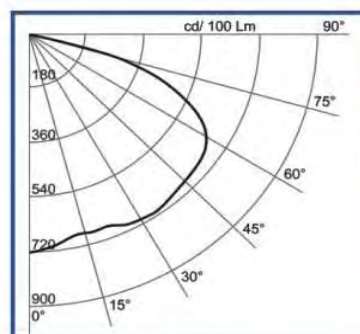
Selected Induction Highbay Lighting For Replacement

Induction High Bay Lighting

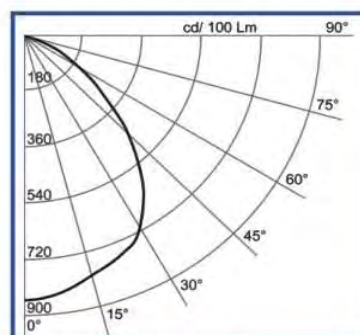
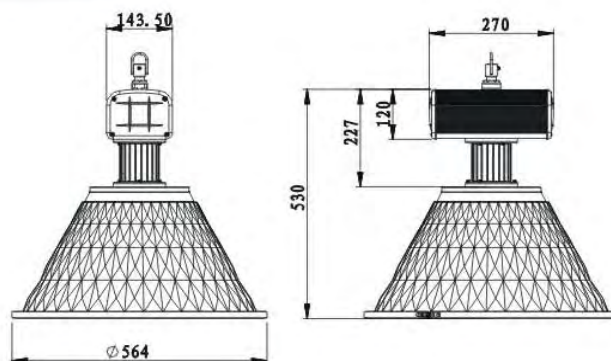
Model IL361

Aluminum Body

Power 80W ~ 200W



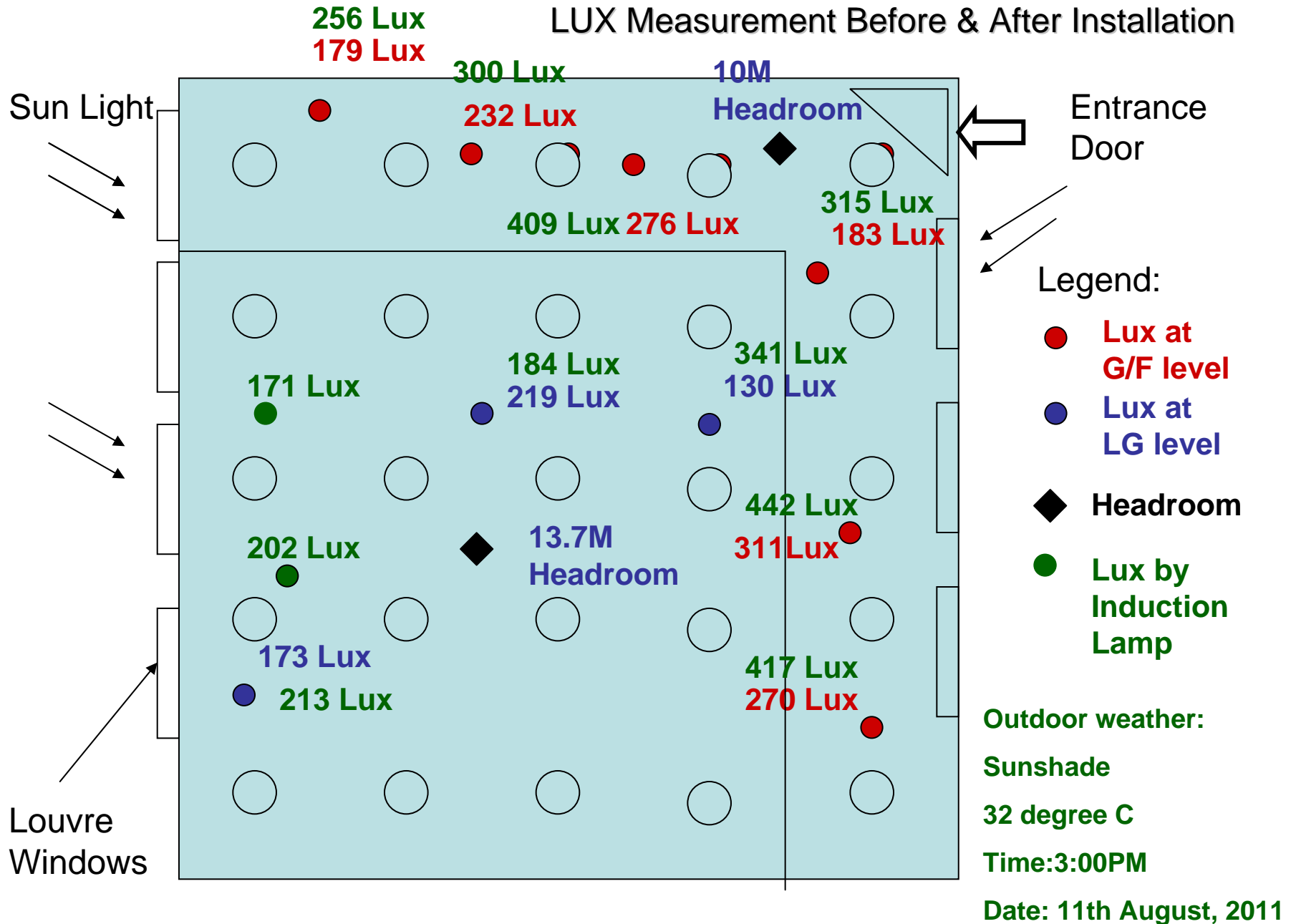
配光曲线 (灯座降低)



配光曲线 (灯座升高)



LUX Measurement Before & After Installation



WSD Shatin Plant Room New High Bay Lighting Layout



Induction Lamp Test at Workshop Before Installation



Voltage	Current
Power	P.F.

Tester Display Data Format

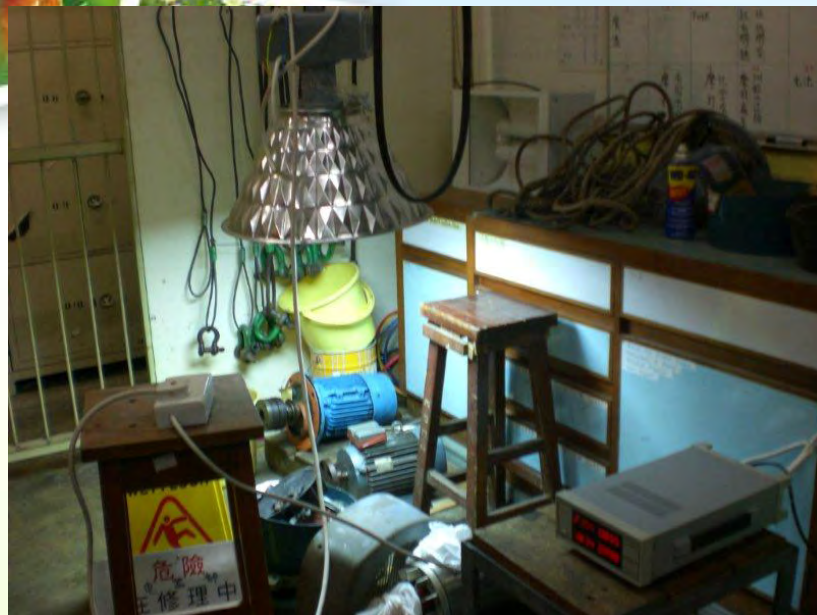
Reading At Start Up

**WSD Shatin Plant Room
Induction High Bay IL-361 Test**



Reading at Half an hour Later Burn-in

Lamp Test Site (Source 1 M above Floor)



5520 LUX after Burn-in 30 minutes

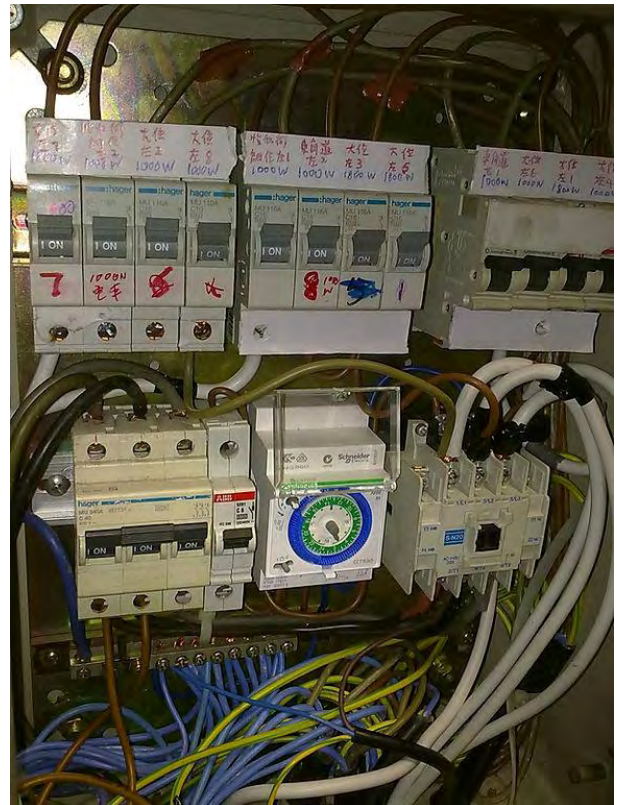
4750 LUX at start up

**WSD Shatin Plant Room
Induction Highbay IL-361 Test**

Intelligent Lighting Control for Advertising Signage

iLighting was Invited to design and install intelligent lighting control and monitoring system for advertising signage at Causeway Bay, Hong Kong.

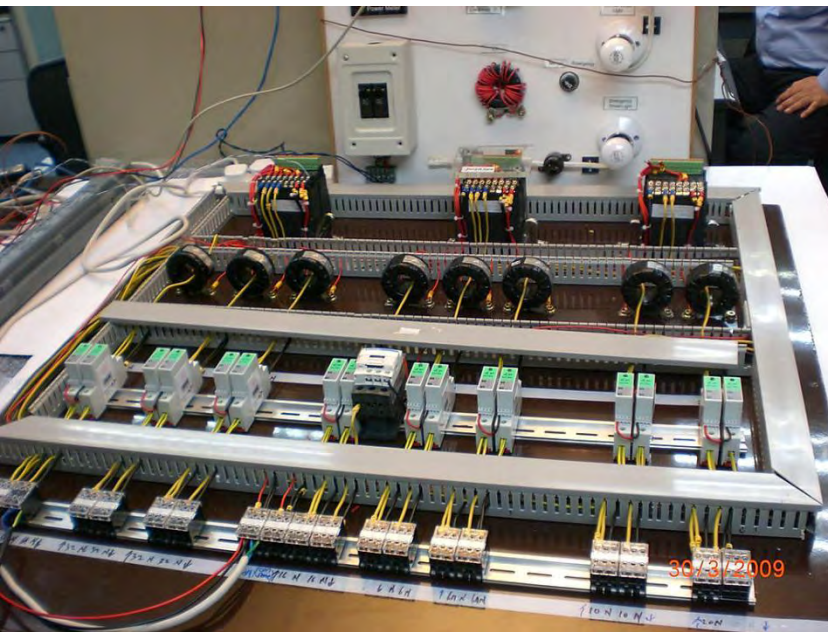
The aim was to investigate the possibility of setting energy management system for all the company signage distributed around HK, Kowloon and N.T. regions, monitored by head office at TST.



Ling O Nuclear Plant Street Lighting Control

iLighting designed and supplied 32 intelligent control station for street lighting monitoring and control system integrated to the central control system to achieve.

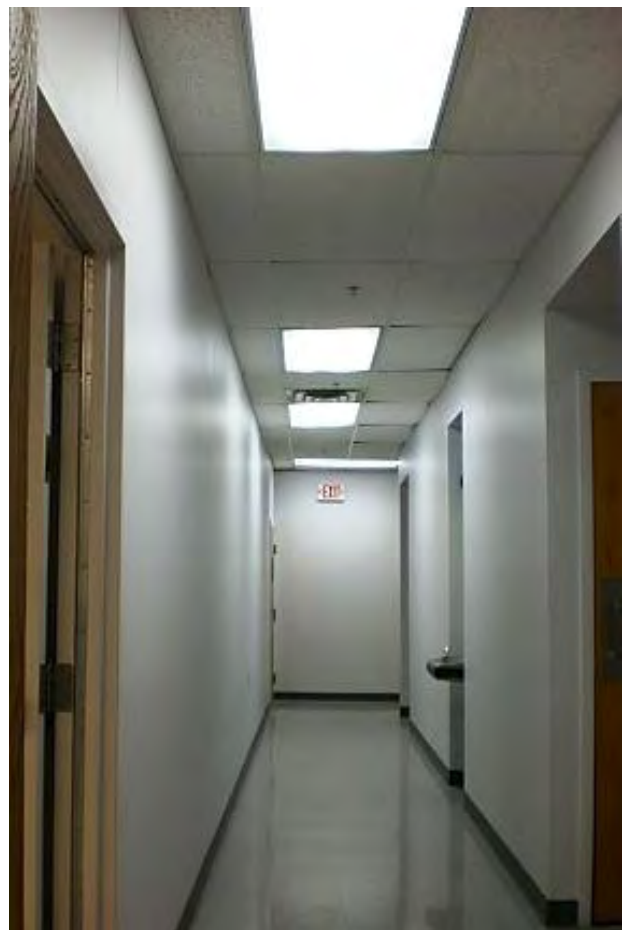
7x24 street light monitoring with Exhelon's iLON Smart Server.



Intelligent Lighting Control At NFF(US)

iLighting was invited to design and install intelligent lighting control and monitoring system at Pittsburg NFF Office for Hong Kong Client, who monitored the energy consumption in Hong Kong far away from US vis the internet applying the US Series Energy Platform. Total 520 pcs. of iLighting LED tubes installed in the office building.





Energy Management Consultation at Miramar Hotel, Hawaii, US.

iLighting Client intends to conduct an energy saving retrofit study to existing Miramar Hotel building at Hawaii, USA. This project will serve as a blue print for implementing energy saving retrofit for Non-government buildings of the Company Group if found feasible. It would also be possible to obtain rebate from US government if the energy saving target is achieved.

