

Emergency Light Product Series

| ES LIGHT COMPANY

CATALOG

www.eslight.com.hk





製造和營銷綠色低碳節能照明產品
Manufacturing And Marketing Green Low Carbon
And Energy Saving Lamping Products

公司簡介COMPANY PROFILE



ES LIGHT COMPANY

簡約照明公司

Our company is committed to the development, manufacturing and marketing of green, low-carbon and energy-saving lighting products. Become a professional lighting design, OEM/ODM manufacturer and supplier.

Product Capacity:

1. Integrated design of LED lighting and built-in advanced electronic driver for building lighting renovation.
2. LED indoor and outdoor lighting with internal and external drivers.
3. LED lighting emergency accessories and charging bag.
4. Ultra-long life induction lamp is used for high-power high bay lights and floodlights.
5. Carry out OEM/ODM energy-saving lighting according to customer requirements for new retrofit installation.

簡約照明(ESLight)有限公司,公司致力於綠色,低碳和節能照明產品的開發,製造和營銷。
成為專業的照明設計,OEM / ODM 製造商和供應商。
我們竭誠為您服務,為您提供種類繁多的LED產品。

產品產能:

- 1.集成設計的LED照明和內置高級電子驅動器,用於建築物照明改造。
- 2.帶有內部和外部驅動器的LED室內和室外照明。
3. LED照明應急配件和充電包。
- 4.超長壽命感應燈用於大功率高棚燈和泛光燈。
- 5.根據客戶的要求進行OEM / ODM 節能照明,以進行新的改造安裝。

Contents

1 / Emergency series 應急系列

P4-P22

Emergency Kit



EL-LI-A9I

P4



EL-LI-P18IL

P4



EL-LT-30

P4



EL-LT-50

P5



EL-LT50A-H20

P5



EL-LT100A-HL20

P5



EL-LT50A-H10

P5



EL-LT100A-H10

P6



EL-LT100A-H5

P6

Emergency Lamp



EL-ND-LED6-AL3WM

P7



EL-LI-LED6-AL3WM

P7



EL-LI-LED6-PL3WM

P7



EL-LI-LED7-PL3SF-1

P7



EL-ND-LED10-PL2WM

P8



EL-ND-LED6-A2RC

P8



EL-ND-LED6-A2SF

P8



EL-LI-LED7-PL3WM

P8



EL-LI-LED7-PL3SF-2

P9



EL-LI-LED7-PL3RC

P9



EL-LI-LED7-PL3WM

P9



EL-LI-LED15-PR3SF-1

P9



EL-LI-LED12-PO3WM-1

P10



EL-LI-LED15-PR3SF-2

P10



EL-LI-LED12-PO3SF

P10



EL-LI-LED5-PR3WM

P10



EL-LI-LED12-PO3WM-2

P11



EL-LI-LED5-P3WM

P11



EL-LI-LED12-PIR3WM

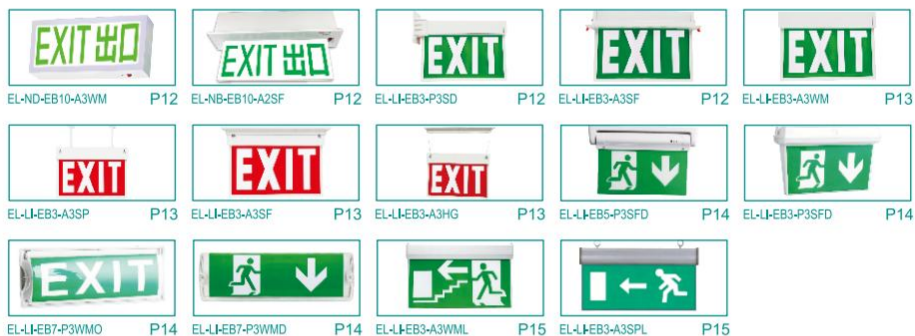
P11



EL-LI-LED15-PIR3SF

P11

Exit Sign



Downlight & Panel



Bulkhead



Batten & Recess



DBA-S06-EN+EL-LT-30

P21



IPB-P1218-N85-S+EL-LT-30

P21



GLP-F0628+EL-LT-30

P21

2 / V0 Standard Product

V0標準產品

P23-P25

LED Tube



LT-R-E

P22



LT-E-E

P22

Downlight



DL-0612-ML-BT-E

P23



DL-R-E

P23

Panel



PL-PN6060-ML-BT-E

P24



PL-PN-T-E

P24

Emergency Series

01 / Emergency Kit

內置鋰電池應急電源

Integrated Lithium Battery Emergency Power Supply



Specification 產品規格

Model	EL-LI-A91
Size	161*38*25mm
Power	9W
Emergency Output	30%
Battery	3.7V 3200mAh
Discharge Duration	2H

內置鋰電池應急電源

Integrated Lithium Battery Emergency Power Supply



Specification 產品規格

Model	EL-LI-P181L
Size	215*41.5*28mm
Power	18W
Emergency Output	30%
Battery	7.4V 2600mAh
Discharge Duration	2H

應急電源電池組件

Emergency Battery and Power Supply Kit



Specification 產品規格

Model	EL-LT-30	
Power	9-18W	
Voltage	AC 220-240V 50HZ	
Battery Type	Ni-Cd	
Discharge Duration	≥2 Hours	
Battery	7.2V/1.5Ah	7.2V/2.5Ah

應急電源電池組件

Emergency Battery and Power Supply Kit



Specification 產品規格

Model	EL-LT-50	
Power	9-18W	
Voltage	AC 220-240V 50HZ	
Battery Type	Ni-Mh	
Discharge Duration	≥2 Hours	
Battery	7.2V/1.5Ah	7.2V/2.5Ah

大功率應急電源電池組件(半功率)

Emergency Battery and Power Supply Kit (Half Power)

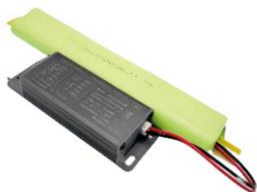


Specification 產品規格

Model	EL-LT50A-H20	
Size	134*53*33mm	
Power	15-200W	
Voltage	AC220V/50Hz	
Compatible Battery	11.1V 2200mAh	
Discharge Duration	2H	

大功率應急電源電池組件(全功率)

Emergency Battery and Power Supply Kit (Full Power)



Specification 產品規格

Model	EL-LT100A-HL20	
Size	141*74*43mm	
Power	15-200W	
Voltage	AC220V/50Hz	
Battery	11.1V 2200mAh	
Discharge Duration	2H	

大功率應急電源(半功率)

High Power Emergency Power Supply (Half Power)



Specification 產品規格

Model	EL-LT50A-H10	
Size	134*53*33mm	
Power	5-100W	
Voltage	AC220V/50Hz	
Compatible Battery	7.4V 2200mAh	
Discharge Duration	2H	

大功率應急電源(全功率)

High Power Emergency Power Supply (Full Power)



Specification 產品規格

Model	EL-LT100A-H10
Size	180*78*44mm
Power	10-100W
Voltage	AC220V/50Hz
Compatible Battery	14.8V 3600mAh
Discharge Duration	2H

大功率應急電源(全功率)

High Power Emergency Power Supply (Full Power)



Specification 產品規格

Model	EL-LT100A-H5
Size	141*74*43mm
Power	5-50W
Voltage	AC220V/50Hz
Compatible Battery	14.8V 2200mAh
Discharge Duration	2H

02 / Emergency Lamp

雙頭應急燈

Twin-Head Emergency Light



Specification 產品規格

Model	EL-ND-LED6-AL3WM
Size	300*55*140*130mm
Power	2*3W
Voltage	AC85-265V/50Hz
Battery	6V 2.2Ah
Discharge Duration	3H

雙頭應急燈

Twin-Head Emergency Light



Specification 產品規格

Model	EL-LI-LED6-AL3WM
Size	275*80*305mm
Power	2*3W
Voltage	AC85-265V/50Hz
Battery	3.7V Li-ion
Discharge Duration	3H

明裝應急燈

Surface-Mounted Emergency Light



Specification 產品規格

Model	EL-LI-LED6-PL3WM
Size	300*75*140mm
Power	2*3W
Voltage	AC85-265V/50Hz
Battery	3.7V Li-ion
Discharge Duration	3H

明裝應急燈

Surface-Mounted Emergency Light



Specification 產品規格

Model	EL-LI-LED7-PL3SF-1
Size	350*55*110mm
Power	7W
Voltage	AC85-265V/50Hz
Battery	3.7V 1800mAh
Discharge Duration	3H

防水壁裝應急燈

Waterproof Emergency Wall Light -IP66



Specification 產品規格

Model	EL-ND-LED10-PL2WM
Size	330*50*50mm
Power	10W
Emergency Output	30%
Battery	7.2V 1.5Ah
Discharge Duration	2H

嵌入式應急燈

Recessed Emergency Light



Specification 產品規格

Model	EL-ND-LED6-A2RC
Size	270*150*60mm
Power	2*3W
Emergency Output	30%
Battery	7.2V 2000mah
Discharge Duration	2H

明裝應急燈

Surface-Mounted Emergency Light



Specification 產品規格

Model	EL-ND-LED6-A2SF
Size	230*120*60mm
Power	2*3W
Emergency Output	30%
Battery	7.2V 2000mah
Discharge Duration	2H

明裝應急燈

Surface-Mounted Emergency Light



Specification 產品規格

Model	EL-LH-LED7-PL3WM
Size	280*120*50mm
Power	7W
Voltage	AC85-265V/50Hz
Battery	3.7V Li-ion
Discharge Duration	3H

明裝應急燈

Surface-Mounted Emergency Light



Specification 產品規格

Model	EL-LI-LED7-PL3SF-2
Size	280*120*50mm
Power	7W
Voltage	AC85-265V/50Hz
Battery	3.7V Li-ion
Discharge Duration	3H

嵌入式應急燈

Recessed Emergency Light



Specification 產品規格

Model	EL-LI-LED7-PL3RC
Size	280*120*50mm
Power	7W
Voltage	AC85-265V/50Hz
Battery	3.7V Li-ion
Discharge Duration	3H

明裝應急燈

Surface-Mounted Emergency Light



Specification 產品規格

Model	EL-LI-LED7-PL3WM
Size	280*120*50mm
Power	7W
Voltage	AC85-265V/50Hz
Battery	3.7V Li-ion
Discharge Duration	3H

應急壁燈

Emergency Wall Light



Specification 產品規格

Model	EL-LI-LED15-PR3SF-1
Size	180*180*80mm
Power	15W
Voltage	AC85-265V/50Hz
Battery	3.7V Li-ion
Discharge Duration	3H

應急壁燈

Emergency Wall Light



Specification 產品規格

Model	EL-LI-LED12-PO3WM-1
Size	110*80mm
Power	12W
Voltage	AC85-265V/50Hz
Battery	3.7V 1800mAh
Discharge Duration	3H

應急壁燈

Emergency Wall Light



Specification 產品規格

Model	EL-LI-LED15-PR3SF-2
Size	180*180*80mm
Power	15W
Voltage	AC85-265V/50Hz
Battery	3.7V Li-ion
Discharge Duration	3H

應急壁燈

Emergency Wall Light



Specification 產品規格

Model	EL-LI-LED12-PO3SF
Size	110*80mm
Power	12W
Voltage	AC85-265V/50Hz
Battery	3.7V 1800mAh
Discharge Duration	3H

應急壁燈

Emergency Wall Light



Specification 產品規格

Model	EL-LI-LED5-PR3WM
Size	120*120*60mm
Power	5W
Voltage	AC85-265V/50Hz
Battery	3.7V 500mAh
Discharge Duration	3H

應急壁燈

Emergency Wall Light



Specification 產品規格

Model	EL-LI-LED12-PO3WM-2
Size	100*55*225mm
Power	12W
Voltage	AC85-265V/50Hz
Battery	3.7V Li-ion
Discharge Duration	3H

應急壁燈

Emergency Wall Light



Specification 產品規格

Model	EL-LI-LED5-P3WM
Size	120*120*60mm
Power	5W
Voltage	AC85-265V/50Hz
Battery	3.7V 500mAh
Discharge Duration	3H

PIR感應應急壁燈

PIR Emergency Wall Light



Specification 產品規格

Model	EL-LI-LED12-PIR3WM
Size	100*55*225mm
Power	12W
Voltage	AC85-265V/50Hz
Battery	3.7V Li-ion
Discharge Duration	3H

PIR感應應急壁燈

PIR Emergency Wall Light



Specification 產品規格

Model	EL-LI-LED15-PIR3SF
Size	180*180*55mm
Power	15W
Voltage	AC85-265V/50Hz
Battery	3.7V Li-ion
Discharge Duration	3H

03 / Exit Sign

應急出口指示牌

Illuminated Emergency Exit Sign



Specification 產品規格

Model	EL-ND-EB10-A3WM
Size	410*180*150mm
Power	10W
Voltage	AC85-265V/50Hz
Battery	6V 1.5Ah
Discharge Duration	2H / 3H

應急出口指示牌

Illuminated Emergency Exit Sign



Specification 產品規格

Model	EL-NB-EB10-A2SF
Size	470*405*85mm
Power	10W
Voltage	AC85-265V/50Hz
Battery	6V 1.5Ah
Discharge Duration	2H

應急出口指示牌

Illuminated Emergency Exit Sign



Specification 產品規格

Model	EL-LI-EB3-P3SD
Size	365*68*235mm
Power	3W
Voltage	AC85-265V/50Hz
Battery	3.7V Li-ion
Discharge Duration	3H

應急出口指示牌

Illuminated Emergency Exit Sign



Specification 產品規格

Model	EL-LI-EB3-A3SF
Size	365*68*235mm
Power	3W
Voltage	AC85-265V/50Hz
Battery	3.7V Li-ion
Discharge Duration	3H

應急出口指示牌

Illuminated Emergency Exit Sign



Specification 產品規格

Model	EL-LJ-EB3-A3WM
Size	365*68*235mm
Power	3W
Voltage	AC85-265V/50Hz
Battery	3.7V Li-ion
Discharge Duration	3H

應急出口指示牌

Illuminated Emergency Exit Sign



Specification 產品規格

Model	EL-LJ-EB3-A3SP
Size	365*68*235mm
Power	3W
Voltage	AC85-265V/50Hz
Battery	3.7V Li-ion
Discharge Duration	3H

應急出口指示牌

Illuminated Emergency Exit Sign



Specification 產品規格

Model	EL-LJ-EB3-A3SF
Size	365*68*235mm
Power	3W
Voltage	AC85-265V/50Hz
Battery	3.7V Li-ion
Discharge Duration	3H

應急出口指示牌

Illuminated Emergency Exit Sign



Specification 產品規格

Model	EL-LJ-EB3-A3HG
Size	365*68*235mm
Power	3W
Voltage	AC85-265V/50Hz
Battery	3.7V Li-ion
Discharge Duration	3H

應急出口指示牌

Illuminated Emergency Exit Sign



Specification 產品規格

Model	EL-LI-EB5-P3SFD
Size	350*110*220mm
Power	5W
Voltage	AC85-265V/50Hz
Battery	3.7V 1800mAh
Discharge Duration	3H

應急出口指示牌

Illuminated Emergency Exit Sign



Specification 產品規格

Model	EL-LI-EB3-P3SFD
Size	355*110*215mm
Power	3W
Voltage	AC85-265V/50Hz
Battery	3.7V Li-ion
Discharge Duration	3H

應急出口指示牌

Illuminated Emergency Exit Sign



Specification 產品規格

Model	EL-LI-EB7-P3WMO
Size	355*85*135mm
Power	7W
Voltage	AC85-265V/50Hz
Battery	3.7V Li-ion
Discharge Duration	3H

應急出口指示牌

Illuminated Emergency Exit Sign



Specification 產品規格

Model	EL-LI-EB7-P3WMD
Size	355*60*110mm
Power	7W
Voltage	AC85-265V/50Hz
Battery	3.7V Li-ion
Discharge Duration	3H

應急出口指示牌

Illuminated Emergency Exit Sign



Specification 產品規格

Model	EL-LI-EB3-A3WML
Size	365*22*210mm
Power	3W
Voltage	AC85-265V/50Hz
Battery	3.7V Li-ion
Discharge Duration	3H

應急出口指示牌

Illuminated Emergency Exit Sign



Specification 產品規格

Model	EL-LI-EB3-A3SPL
Size	365*22*210mm
Power	3W
Voltage	AC85-265V/50Hz
Battery	3.7V Li-ion
Discharge Duration	3H



Note: Support customizing more graphics. . .

04 / Downlight & Panel

應急面板燈

Emergency Slim Light Panel



Specification 產品規格

Model	EL-PL-30-H26636
Size	L595*W595*H35mm
Power	36W
Emergency Output	30%
Battery	7.2V 4Ah
Discharge Duration	2H

應急筒燈

Emergency Downlight



Specification 產品規格

Model	EL-DL-30-H310
Size	330*50*50mm
Power	3W
Emergency Output	30%
Battery	3.6V 1.5Ah
Discharge Duration	3H

應急筒燈

Emergency Downlight



Specification 產品規格

Model	EL-DL-30-H308
Size	80*80mm
Power	3W
Emergency Output	30%
Voltage	AC85-265V/50Hz
Discharge Duration	3H

應急聲控筒燈

Emergency Sound Control Downlight



Specification 產品規格

Model	EL-DL-30-H308CV
Size	80*80mm
Power	3W
Voltage	AC85-265V/50Hz
Emergency Output	30%
Discharge Duration	3H

應急感應吸頂燈

Emergency Sensor Ceiling Light



Specification 產品規格

Model	EL-DL-30-H308CIR-1
Size	80*80mm
Power	3W
Voltage	AC85-265V/50Hz
Emergency Output	30%
Discharge Duration	3H

應急感應吸頂燈

Emergency Sensor Ceiling Light



Specification 產品規格

Model	EL-DL-30-H308CIR-2
Size	80*80mm
Power	3W
Voltage	AC85-265V/50Hz
Emergency Output	30%
Discharge Duration	3H

應急感應筒燈

Emergency Sensor Ceiling Light



Specification 產品規格

Model	EL-DL-30-H312SIR
Size	120*120*60mm
Power	5W
Emergency Output	30%
Battery	3.7V 500mAh
Discharge Duration	3H

應急吸頂燈

Emergency Ceiling Light



Specification 產品規格

Model	EL-TL-30-H323SM
Size	230*230mm
Power	18W
Voltage	AC220V/50Hz
Emergency Output	30%
Discharge Duration	3H

應急感應吸頂燈

Emergency Sensor Ceiling Light



Specification 產品規格

Model	EL-TL-30-H323SMIR-1
Size	230*230mm
Power	18W
Voltage	AC220V/50Hz
Emergency Output	30%
Discharge Duration	3H

應急感應吸頂燈

Emergency Sensor Ceiling Light



Specification 產品規格

Model	EL-TL-30-H323SMIR-2
Size	230*230mm
Power	18W
Voltage	AC220V/50Hz
Emergency Output	30%
Discharge Duration	3H

應急感應吸頂燈

Emergency Sensor Ceiling Light



Specification 產品規格

Model	EL-TL-30-H323SMIR-3
Size	230*230mm
Power	18W
Voltage	AC220V/50Hz
Emergency Output	30%
Discharge Duration	3H

應急感應吸頂燈

Emergency Sensor Ceiling Light



Specification 產品規格

Model	EL-TL-30-H323SMIR-4
Size	230*230mm
Power	18W
Voltage	AC220V/50Hz
Emergency Output	30%
Discharge Duration	3H

防水應急艙壁燈 - IP66

Waterproof Emergency Bulkhead Light- IP66



Specification 產品規格

Model	ILR-A18-S+EL-LT-30
Size	315*95mm
Power	6W
Emergency Output	30%
Battery	7.2V 2.5Ah
Discharge Duration	2H

防水應急艙壁燈-IP66

Waterproof Emergency Bulkhead Light- IP66



Specification 產品規格

Model	ILR-A18-R+EL-LT-30
Size	315*100mm
Power	6W
Emergency Output	30%
Battery	7.2V / 4Ah
Discharge Duration	3H

應急艙壁燈 - IP43

Emergency Bulkhead Light- IP43



Specification 產品規格

Model	ILR-P-S+EL-LT-30
Size	D325*H100mm
Power	6W
Emergency Output	30%
Battery	7.2V / 2.5Ah
Discharge Duration	2H

應急支架燈管套件

Emergency Batten Light Kit



Specification 產品規格

Model	DBA-S06-EN+EL-LT-30
Size	620*58mm
Power	10W
Emergency Output	30%
Battery	7.2V 1.5Ah
Discharge Duration	2H

T8/T5應急防潮燈盤-IP65

T8/T5 Emergency Weatherproof Batten Light - IP65

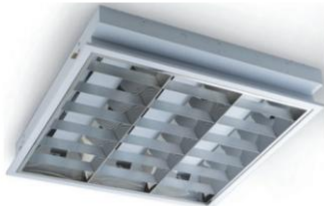


Specification 產品規格

Model	IPB-P0609-N65-S+EL-LT-30	
Model	IPB-P1218-N65-S+EL-LT-30	
Size(mm)	655*120.5*88.5	1268*120.5*88.5
Power	1x9W	1x18W
Emergency Output	30%	
Battery	7.2V/ 1.5Ah	7.2V/ 2.5Ah
Discharge Duration	2-3H	

嵌入式T8應急格柵燈盤

Recessed T8 Emergency Grille Light



Specification 產品規格

Model	GLP-F0628+EL-LT-30
Size	600*600*80mm
Power	3x9W
Emergency Output	30%
Battery	7.2V/1.5Ah
Discharge Duration	2H

▲▼ V0 Standard Product ▲▼

01 / Tube

T8 燈管

T8 Tube



Specification 產品規格

Model	LT-I8-E	
Length	600mm	1200mm
Power	9-18W	
Lumen Output	120Lm/W	
Fire Rating	V0	
Emergency Adaptation	Yes	

T5 燈管

T5 Tube



Specification 產品規格

Model	LT-I5-E	
Length	600mm	1200mm
Power	9-18W	
Lumen Output	120Lm/W	
Fire Rating	V0	
Emergency Adaptation	Yes	

02 / Downlights

感應筒燈

Motion Sensor Downlight



Specification 產品規格

Model	DL-0612-ML-BT-E	
Size(mm)	180*180*35	160*160*35
Power	8W	
Lumen Output	180Lm/W	
Fire Rating	V0	
Emergency Adaptation	Yes	

筒燈

Downlights



Specification 產品規格

Model	DL-IR-E	
Size(mm)	190*190*80	160*160*65
Power	8W	
Lumen Output	150Lm/W	
Fire Rating	V0	
Emergency Adaptation	Yes	

03 / Panel Lamps

感應面板燈

Motion Sensor Panel Lamps



Specification 產品規格

Model	PL-PN6060-ML-BT-E	
Size(mm)	600*600	300*1200
Power	15-36W	
Lumen Output	180Lm/W	
Fire Rating	V0	
Emergency Adaptation	Yes	

面板燈

Panel Lamps



Specification 產品規格

Model	PL-PN-T-E	
Size(mm)	600*600	300*1200
Power	15-36W	
Lumen Output	180Lm/W	
Fire Rating	V0	
Emergency Adaptation	Yes	

The Difference Between Ni-Cd, Ni-MH and Li-ion



Ni-Cd 鎳鎘電池

這種電池有充電記憶效應，如果沒有完全放電就充充電，會令容量降低，鎘也是一種重金屬有害物質，對環境有污染。

Ni-MH 鎳氫電池

屬於高容量電池，不存在充電記憶效應，容量比同類鎳鎘電池高，電池效能比鎳電池差一些，但價格也便宜一些。

Li-ion 鋰離子電池

比鎳鎘，鎳氫電池有更高的容量和更輕的重量壽命也最長，充電時間最短，無記憶效應。電量儲備大但需用專用充電器，用普通充電器會降低充電效果和壽命。效能方面最好的是鋰電池，現時大部分數碼產品都使用鋰電池。

Ni-Cd

This type of battery has a charging memory effect. If it is charged without complete discharge, it will reduce its capacity. Cadmium is also a harmful heavy metal substance that pollutes the environment.

Ni-MH

Belonging to high capacity batteries, there is no charging memory effect, and the capacity is higher than similar nickel cadmium batteries. The battery efficiency is slightly worse than lithium batteries, but the price is also cheaper.

Li-ion

Compared to nickel cadmium, nickel hydrogen batteries have higher capacity, lighter weight, longest lifespan, shortest charging time, and no memory effect. The battery reserve is large but requires a dedicated charger. Using a regular charger will reduce charging efficiency and lifespan. The best in terms of efficiency is lithium batteries, which are currently used in most digital products.





Emergency Products

Before placing an order Q&A

應急產品下單前 Q&A

Q1: 需要接應急的產品? / Products that need emergency response?

A1: ① LED燈管; ② 熒光燈; ③ LED筒燈/面板燈; ④ 其他;

()
 LED燈管 熒光燈 LED筒燈/面板燈 其他

Q2: 接應急產品功率? / Emergency product power?

A2: ① 9W; ② 18W; ③ 22W; ④ 其他;

()
 9W 18W 22W 其他

Q3: 應急亮度 (出光亮度)?

Emergency brightness (light output brightness)?

A3: ① 10%; ② 30%; ③ 50%; ④ 100%;

()
 10% 30% 50% 100%

Q4: 應急時間? / Emergency Time?

A4: ① 2小時; ② 3小時;

()
 2小時 3小時

Q5: 電池材料? / Battery Materials?

A5: ① Ni-Cd; ② Ni-Mh; ③ Lithium;

()
 Ni-Cd Ni-Mh Lithium

Q6: 多長時間充滿電? / How long does it take to fully charge?

A6: ① 12H; ② 24H;

()
 12H 24H

Q7: 外置電源是否固定在應急金屬盒內 (如筒燈, 面板燈)?

Is the external power supply fixed in the emergency metal box (such as downlights, panel lights)?

A7: ① Yes; ② No;

()
 Yes No

Q8: 安裝在什麼支架? / What bracket is it installed on?

A8: ① 英式支架; ② 防水支架(寬度須大於100mm); ③ 普通支架(寬度須大於60mm);

()
 英式 防水 普通
 支架 支架 支架

Q9: 感應管配應急電池使用中, 停電後是否有感應功能。

The induction tube is equipped with an emergency battery and is in use to check whether it has induction function after power outage.

A9: ① 有; ② 無;

()
 有 無

Q10: 關於保養

A10: ① 燈具保養: () ② 電池保養: ()
 2年 3年 5年 1年 3年

產品保養選擇	常規燈具商用款式保二年, 工程款式保三年, 如需保五年單價會貴15%。 電池常保保一年, 如需保三年單價會貴15%。
免費保修的範圍	1. 超過保定期; 2. 非本公司質量問題引起的故障和損壞; 3. 非產品本身問題: 由於人為原因及用戶錯誤或不當使用、保管、保養或操作不當造成的故障和損壞; 4. 未經過我司授權, 擅自拆卸或維修造成的損壞。
超過保定期	1. 超過保定期, 需支付額外的維修費及人工雜費等; 2. 如寄存在本公司維修, 維修完畢可免費保存貨物一個月, 超過時間我司將額外收取產品價值20%的倉儲費; 3. 過保養期的產品, 本公司有權利不承擔維修義務。

A || Specifications can be customized 規格參數可度身訂造

- A1. 功率可選: 9-20W + 20-30W + 30-50W +
- A2. 輸出流明可選: 140lm/W + 160lm/W + 180lm/W +
- A3. 色溫可選: 3000K + 4000K + 6000K +
- A4. 顯色度可選: 70Ra + 80Ra + 90Ra +
- A5. LED燈珠可選: 綠明 + 首爾 + 三星 +
- A6. 有無頻閃可選: 有頻閃 + 無頻閃 +
- A7. 燈管轉頭可選: T5轉T8 + T8轉T5 +
- A8. 諧波指數可選: THD<15 + THD>15 +
- A9. 功率因數可選: PF0.5 + PF0.9 +
- A10. 色容差可選: SDCM<3 + SDCM>3 +

B || Special projects can be tailor-made 特殊項目可度身訂造

- B1. 防火等級可選: V0 + V1 + V2 +
- B2. 接線方式可選: 單端 + 雙端 + 單雙端 +
- B3. 認證可選: 能源標籤 + 特殊測試 +

* The above items can be customized. Please contact us for specific quotation.
Phone: 852-3107 7500 Email: info@eslighting.com.hk



ESY[®] 簡約照明有限公司
ESLamp LIMITED COMPANY

Office Address: Room B3, 18/F Bonsun Industrial Building,
364-366 Sha Tsui Road, Tsuen Wan, HongKong

Phone: (+852) 3107 7500

Fax: (+852) 3544 0462

Whatsapp: (+852) 6946 2500

Email: info@eastlike.com