

Photo Sensor LED T8 tube

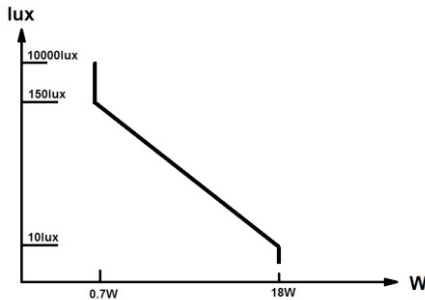
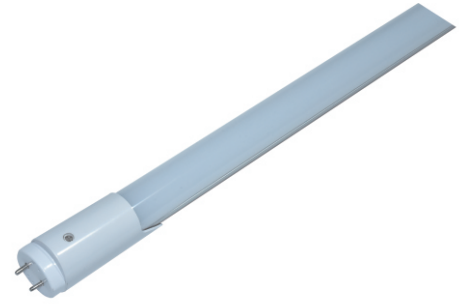


Lighting Source

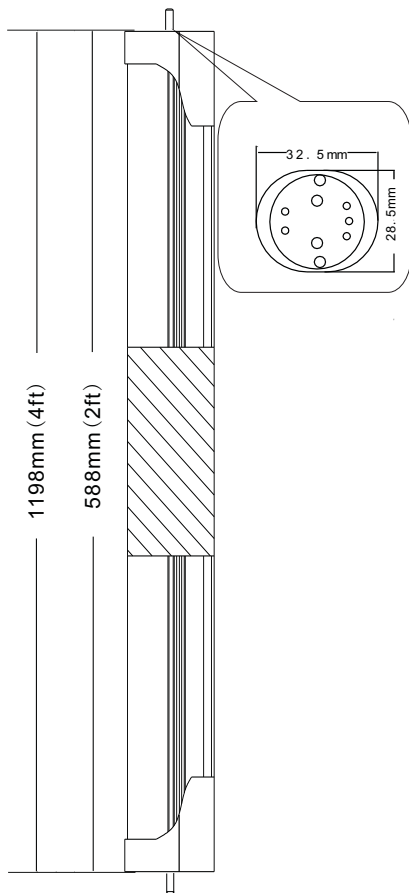
Model : LT-I0609-PS/LT-I1218-PS

Features:

1. Uniform light emission.
2. Retrofit to existing T8 lights on EM.
3. The tube's power will be optimised to 9W(0.6M)/18W(1.2M) for 100% light output if environment drop below 10 lux. User can set other desired lux level by potentiometer.
4. The tube's power will be gradually decrease to 0.7W for lower light output when environment illumination reach 150 lux.



Model:LT-I0609-PS
LT-I1218-PS



Standard

Tube Dimension	Ø 26.5mm*588/1198mm
Voltage (V)	220~240 VAC (50-60 Hz)
Lamp Holder	T8, G13
Beam Angle	180 degree
CRI	>80Ra
Luminous Efficacy	100lm/w
Power Factor	> 0.95
Power (W)	LT-I0609-PS 9W LT-I1218-PS 18W
Put out Mode (W)	LT-I0609-PS 0.7W LT-I1218-PS 0.7W
Cover Material	Aluminium , PC Cover
Color Temperature	2700K/3000K/4000K/6500K
Life Time	30,000(H)